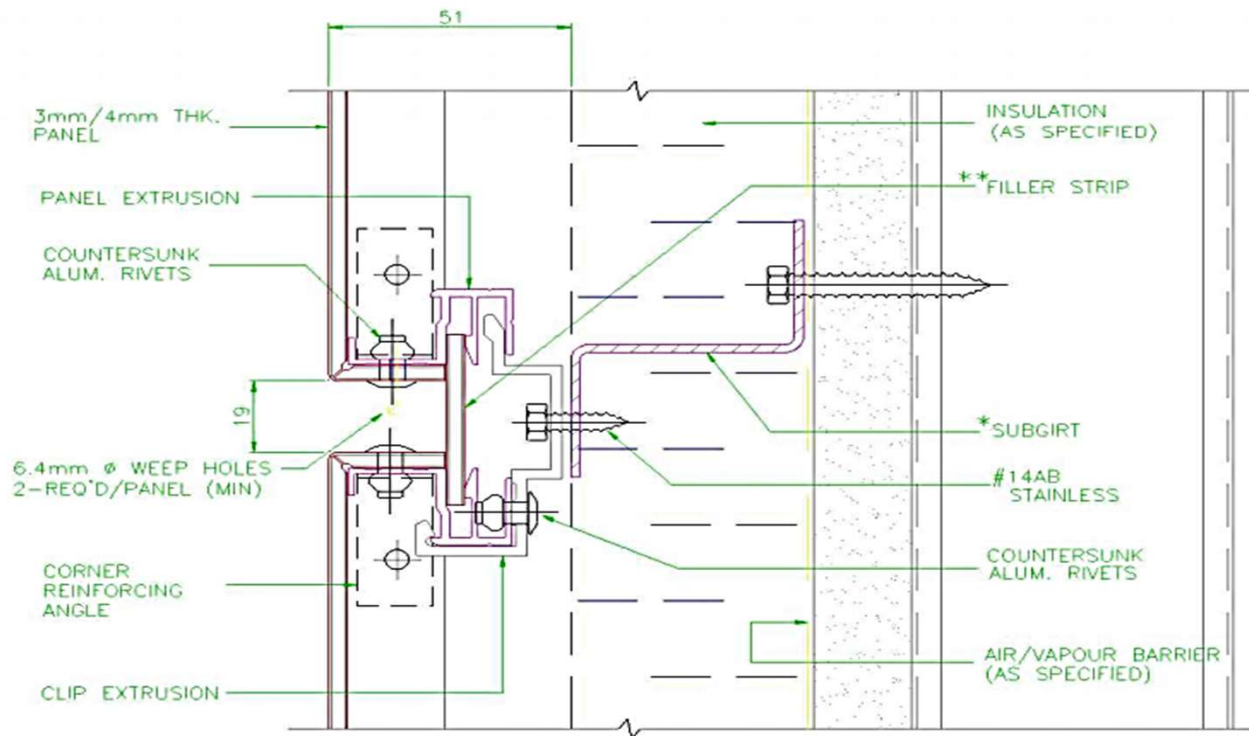




## **ALUMAX PANEL**

Alumax Panel Inc.  
Built with Sophistication

# Alumax Panel ACM Installation Guide



## 1 HORIZONTAL JOINT DETAIL

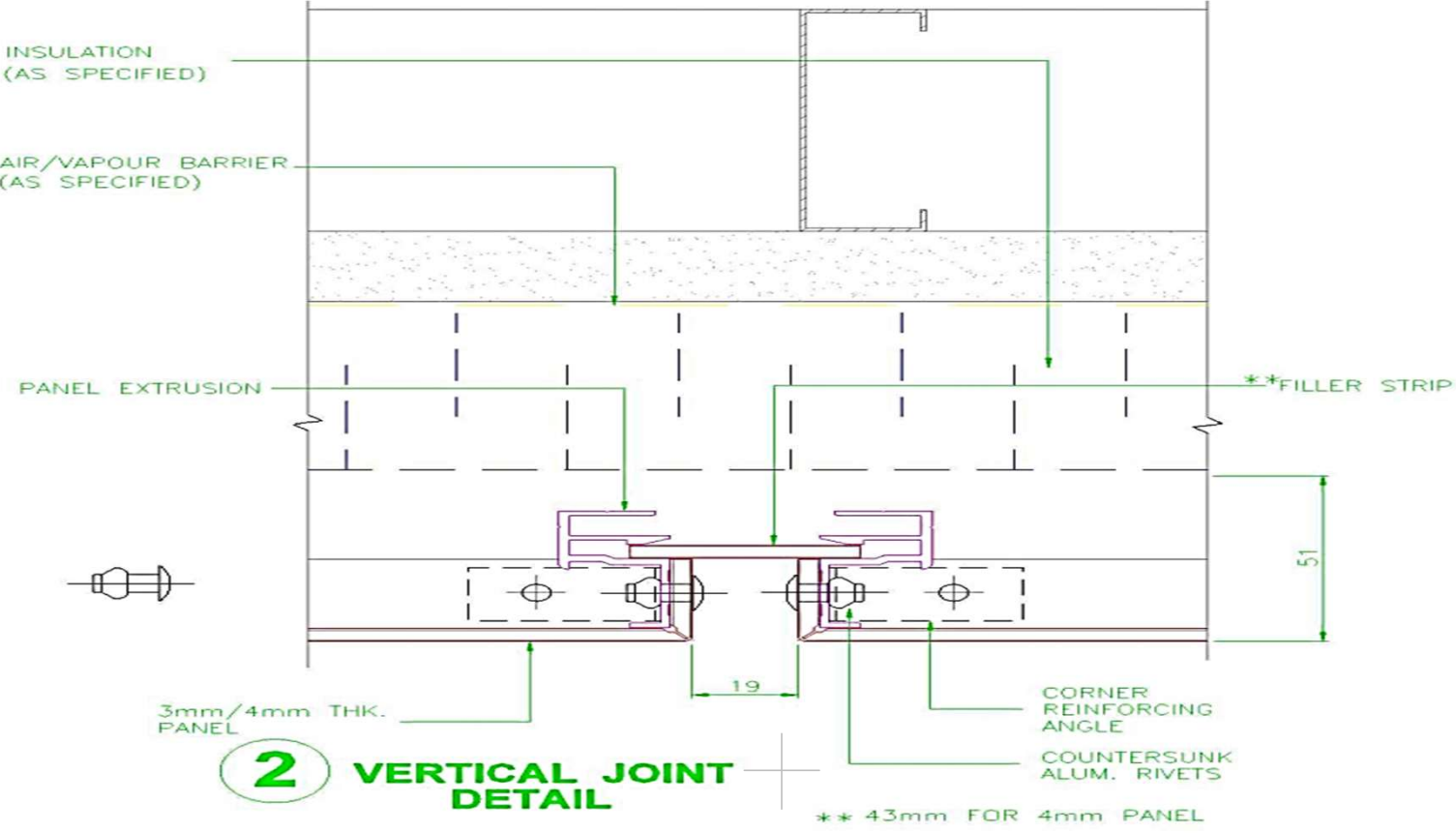
\* SUBGIRT TO SUIT PROJECT REQUIREMENTS  
\*\* 43mm FOR 4mm PANEL

Details must be reviewed and modified as required to suit individual project conditions

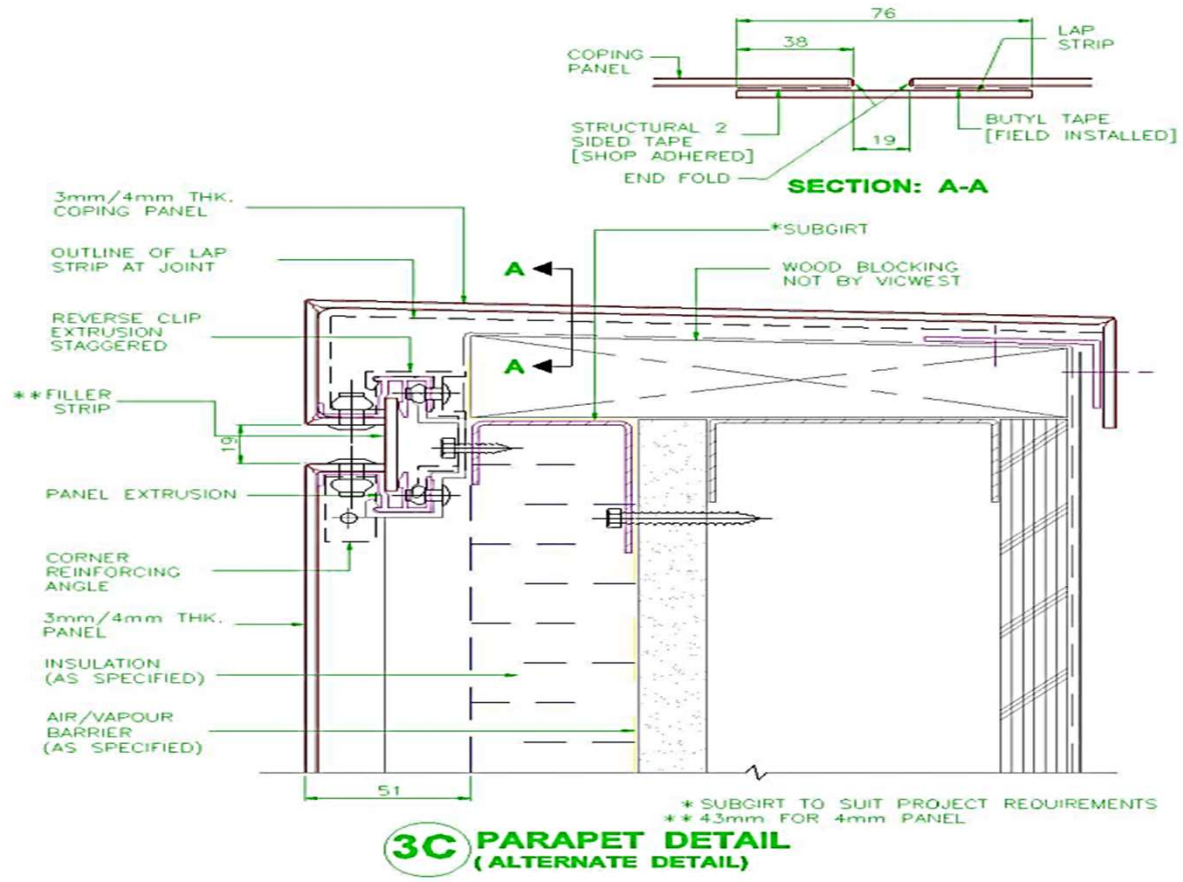


ALUMAX PANEL

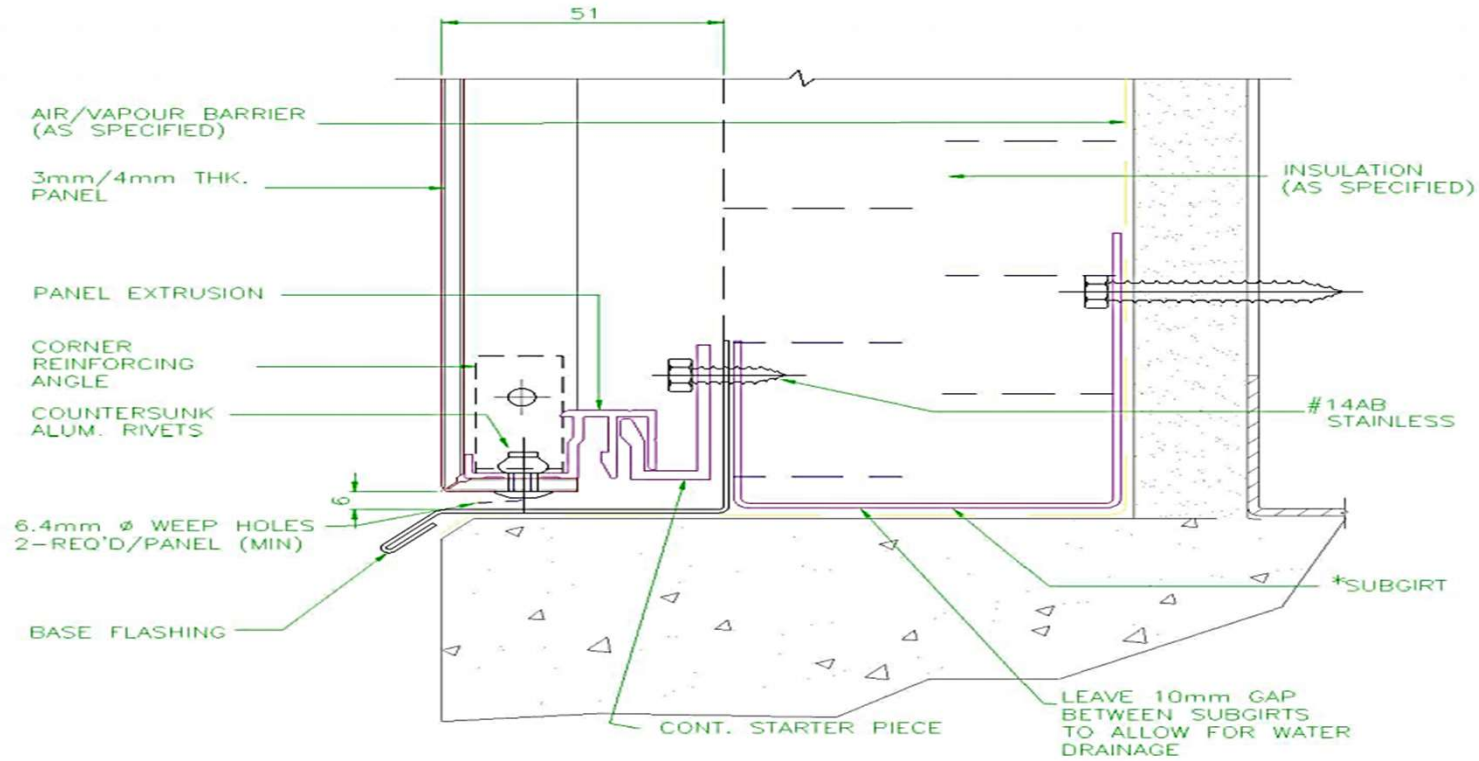
# Alumax Panel ACM Installation Guide



# Alumax Panel ACM Installation Guide



# Alumax Panel ACM Installation Guide



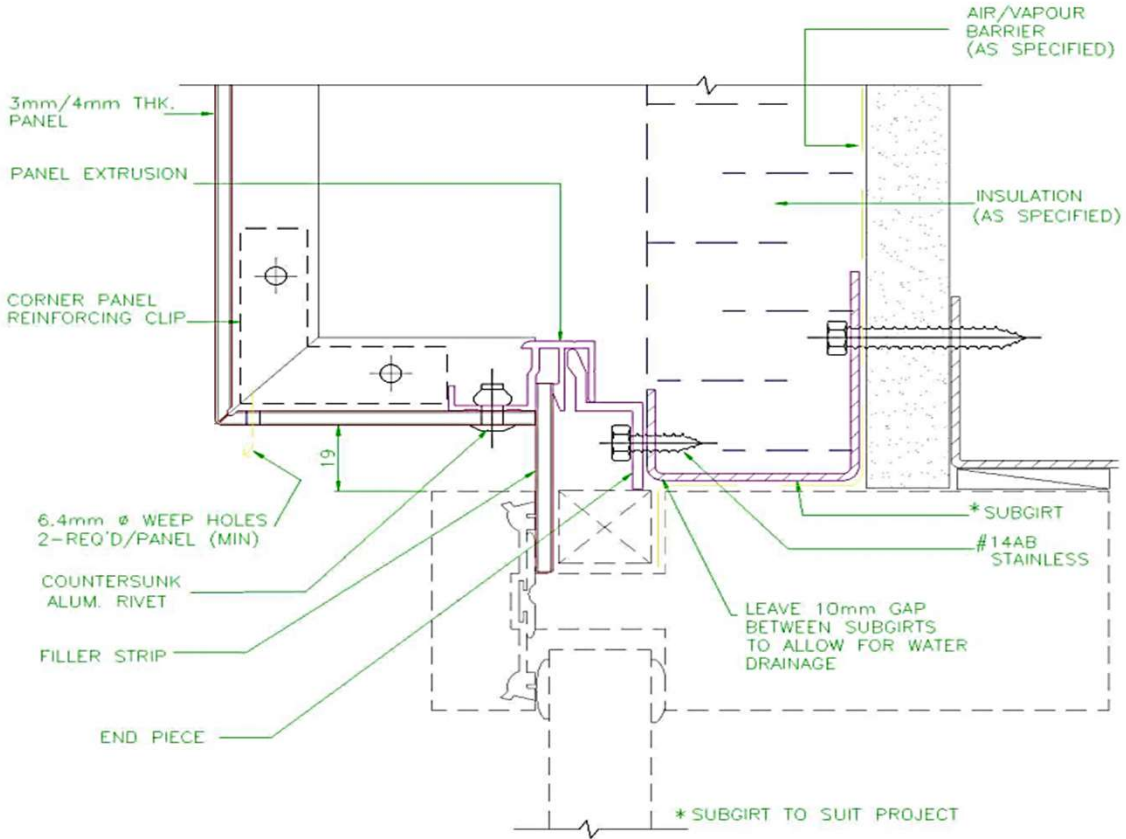
**4A**

**BASE DETAIL  
(ALTERNATE DETAIL)**



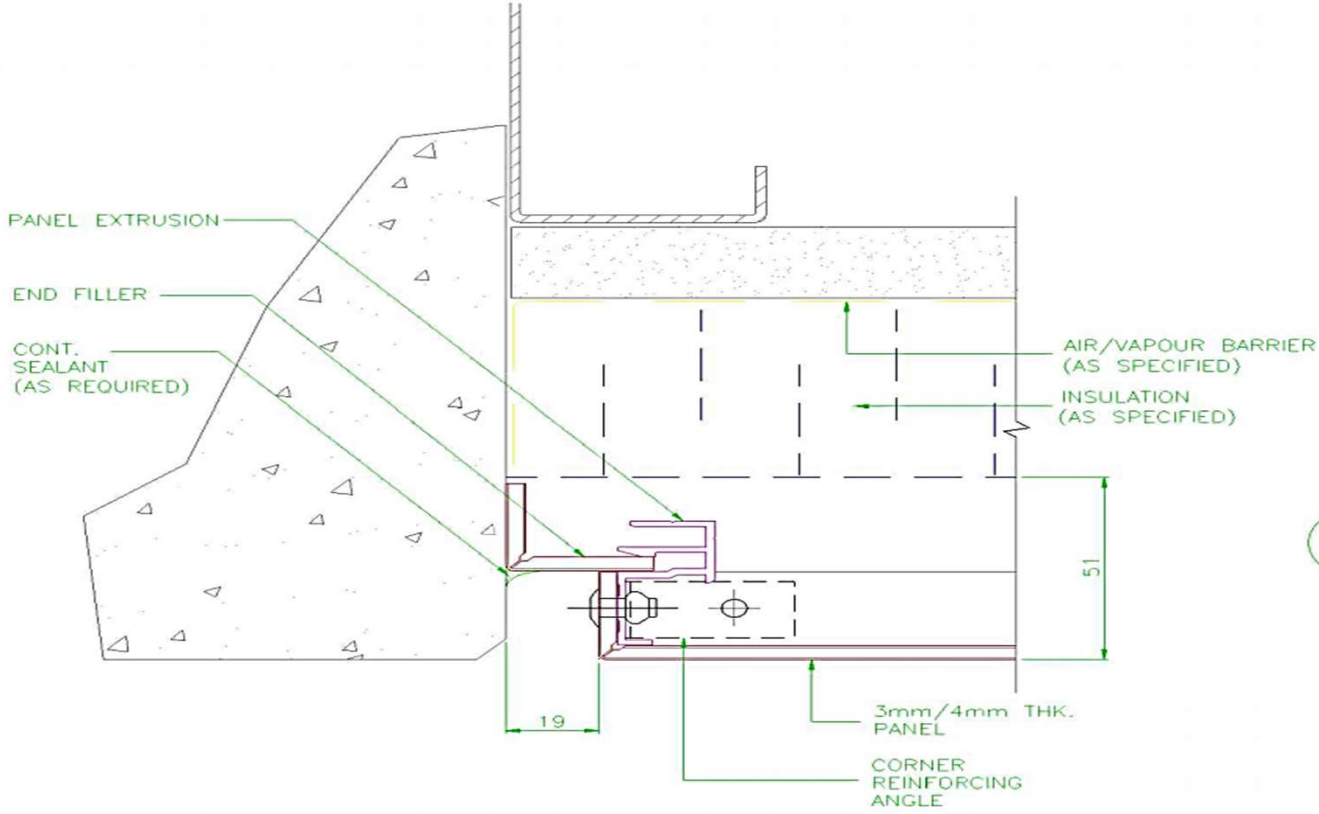
**ALUMAX PANEL**

# Alumax Panel ACM Installation Guide



**6B** WINDOW HEAD DETAIL (ALTERNATE DETAIL)

# Alumax Panel ACM Installation Guide



**9** END DETAIL



## ALUMAX PANEL

For more information, please visit our website [www.alumaxpanel.com](http://www.alumaxpanel.com)

E: [info@alumaxpanel.com](mailto:info@alumaxpanel.com)

P: 888-578-7787

Follow us on Social Media:

@alumaxpanel

